



BRIDGE BATH LIFT

Instruction Manual



Phone

(212) 366-5483



Contact

Info@ClimbingSteps.com

www.MobilePatientLift.com



Address

6601 Lyons Rd, Suite C10,
Coconut Creek, FL 33073



MOBILE PATIENTLIFT





1.0	Introduction
	1.1 - Indication for Use
	1.2 - General Description / Intended Use
	1.3 - Disclaimer
	1.4 - Unpacking the Device
2.0	Symbols and Definitions Used in the Manual
	2.1 - Warning/Cautions
	2.2 - Safety Precautions
3.0	The Bridge Bath Lift Features
4.0	Technical Specifications
5.0	Diagram of Lift
	5.1 - Charging the Bridge Bath Lift
6.0	Assembling the Bridge Bath Lift
7.0	Operation Details
8.0	Care and Cleaning Instructions
9.0	FAQs
10.0	Troubleshooting
11.0	Limited Warranty
12.0	Device Label

1.0 Introduction

Thank you for purchasing the Bridge Bath Lift! We aim to provide the safest and most adaptable bathroom safety equipment on the market. Please read this manual in its entirety before operating or maintaining this product.



Improper usage of this device can cause injury. The Bridge Bath Lift must only be operated as described in this manual. Do not modify the Bridge Bath Lift as modifications can result in unpredictable performance and result in injury.

NOTE: This manual should remain with the Bridge Bath Lift at all times.

For customer service or technical assistance,
please contact us via email Info@ClimbingSteps.com

1.1 Indications for Use

The Bridge Bath Lift is designed for individuals with limited mobility, offering them a seamless means to access and exit the bathing area within the comfort of their homes. Its primary purpose is to alleviate the challenges of bathing for those with limited mobility, thereby enhancing their bathing experience. This device is particularly beneficial for individuals who struggle with traditional methods of entering and exiting the bathtub, providing them with a solution that promotes independence and convenience.



DO NOT use this lift to transport occupants
who may have cervical, spinal, or fracture injuries.

1.2 General Description / Intended Use

Designed to facilitate the smooth transfer of users into and out of the bathing area, the Bridge Bath Lift prioritizes safety and ease of use. Users should be securely positioned within the lift, ensuring their safety. The operator must read this manual and be properly trained on this product before use.

1.3 Disclaimer

This user manual contains general instructions and guidelines for the use, operation, and care of this product. These instructions are not all-inclusive. The safe and proper use of this product is solely at the discretion of the user. Safety information is included as a service to the user. All other safety measures taken by the user should be within and under consideration of applicable regulations.

1.4 Unpacking the Device

Unpack your brand new Bridge Bath Lift, remove all the shipping and packing materials, and check all the items for proper operation. If anything is missing or noted not to be correct, or any type of damage is present due to shipping, please contact Mobile PatientLift.

Items Included:

- 1 x Bridge Bath Lift
- 1 x Remote Control
- 1 x Charger
- 1 x Instruction Manual



2.0 Symbols and Definitions Used in this Manual



Consult instructions for use.



Serial Number of the device.



Date of Manufacture.



Product should not be disposed of with your other household waste.



Check sign explains the items that you should comply with upon operation, repair and maintenance of this device.



Do not lubricate the belts or tracks of this device.



Mechanical moving parts.

2.1 Warning / Caution

These words carry special meanings and should be carefully reviewed.



This symbol alerts the reader about a situation which, if not avoided, could result in death or serious injury. It may also describe potential serious adverse reactions and safety hazards.



This symbol alerts the reader of a potentially hazardous situation which, if not avoided, may result in minor or moderate injury to the user or patient or damage the product or other property. This includes special care necessary for the safe and effective use of the device and the care necessary to avoid damage to a device that may occur as a result of use or misuse.

NOTE: This provides special information to make maintenance easier or important instructions clearer.

2.2 Safety Precautions



1. Read this entire user manual before using the Bridge Bath Lift, and use this device only as described in this manual. Please install the bath lift according to the installation instructions.
2. Make sure the Emergency Button is functional prior to use.
3. Do not use on heavily sloped (over 5°) or surfaces with step.
4. Do not attempt to transport occupant loads greater than what it is specified on this manual. Overload of weight can cause damage to the lift.
5. For users unable to maintain a seated position independently, please avoid using the Bridge Bath Lift without the presence of a supervising individual who can provide necessary assistance.
6. Before using, make sure the suction cups and seat are clean, and remove any dirt or spills. Check all parts to see if they're all there. Do not use if parts are missing and/or broken.
7. Excessive use of bath oil or bath salts and other bathing products will accelerate the aging of the chair frame structure.
8. When using, the user should sit down slowly and calmly to avoid excessive stimulation and damage to the bath lift.
9. During lifting and lowering of the bath lift, do not put body parts such as hands, feet, and other items into the moving parts.
10. Do not place the hand control near heat sources.
11. Do not stand or kneel on the bath lift.
12. Avoid using this device on tubs with textured or anti-slip surfaces, as they may not provide secure adherence.
13. Do not use for other purposes except bathing.
14. Do not leave children alone for using.

3.0 Bridge Bath Lift Features

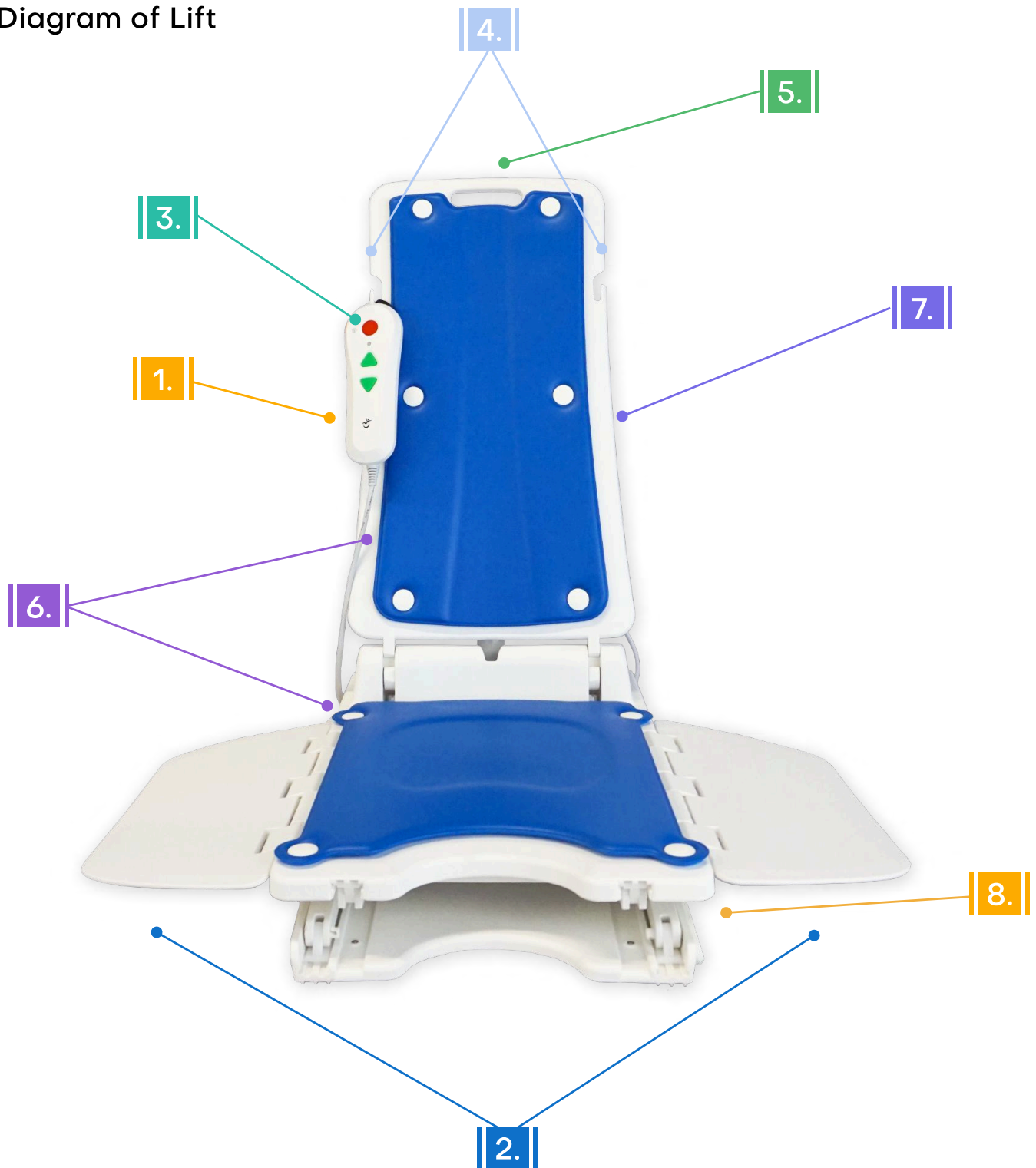
- **Compact & Convenient:** Simply remove it from the bathtub when you're done and put it away until next time. With its lightweight design, one person can easily move it around.
- **Independent Use:** With just one required operator, you'll be able to get in and out of the tub quickly and independently with ease.
- **Recline & Relax:** For added relaxation, after the bath lift is fully lowered, the seat on the Bridge Bath Lift will recline an additional 54 degrees. This will allow you to truly unwind in the bathtub and ease any tension that you may be feeling.
- **Adjustable Height:** The Bridge Bath Lift is also adjustable in height to fit different tub sizes, so you can ease yourself in and out of the tub regardless of depth.
- **Safe & Reliable:** The Bridge Electric Bath Lift features an emergency stop feature included in the design, should you ever need to stop or exit the tub immediately while in operation.
- **Easy Transfer:** Keep yourself safe while using the Bridge Bath Lift with its integrated side flaps. These are designed to rest on the edge of the tub to allow you to slide directly into the seat.
- **Waterproof Remote:** This design prevents water from damaging the electronic controls, so you can adjust your lift without any difficulties

4.0 Technical Specifications

- A** Lift Height: 25"
- B** Lift Width: 14.4"
- C** Lift Depth: 23.6"
- D** Adjustable Height: 3" - 20"
- E** Back Rest Width: 11.5" - 13"
- F** Back Rest Height: 28"
- G** Seat Width: 13.5"
- H** Seat Depth: 17"
- I** Seat Flap Width: 7"
- J** Seat Length with Flaps: 28"



5.0 Diagram of Lift



1. Waterproof Remote

3. Emergency Stop Button

5. Portability Handle

7. Reclining Back

2. Transferring Flaps

4. Remote Hooks

6. Removable Seat Pads

8. Adjustable Height

5.1 Charging the Bridge Bath Lift



1. Disconnect the hand control from the bath lift.
2. Ensure that the connection parts and the charger are sufficiently dry.
3. Plugging the female plug of the hand control into the male plug of the charger.
4. Plug the charger into a suitable outlet. Charging voltage range: 100-240VAC.
5. When charging is finished, please disconnect the charge in time to avoid affecting the battery life.

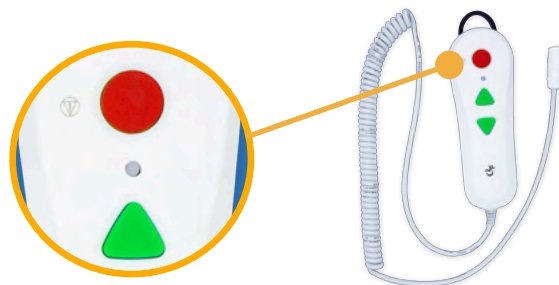


NOTE:

- Use the designated charger provided for the hand control only.
- Avoid contact with water or heat while charging.
- Fully charge before first use.

Light Indicators:

- **Green light:** Sufficient power.
- **Blue light:** Low power, charge soon.
- **Red light:** Critical low power, charge immediately to prevent sudden failure.



Storage Guidelines:

- Disconnect hand control during long-term storage.
- Store in a cool, dry, dust-free, non-corrosive environment.
- Maintain battery power at 40-60% when storing.
- Charge and discharge once every 6 months during storage.

Recommended* Storage Time for Specific Environments:

- 1 year 10-25°C (1*), 40 - 70% RH (non-condensing)
- 3 months 0-35°C (1*), 30 - 75% RH (non-condensing)
- 1 month -10-50°C (1*), 20 - 80% RH (non-condensing)

*Exceeding these times requires using the battery.

6.0 Assembling the Bridge Bath Lift

STEP 1

Pull the components of the lift out of the box. The main components will consist of **the base**, **the backrest** and **the remote control**.



STEP 2

Place the base of the lift on a flat surface and place the back rest on top. Making sure the backrest hooks align with the base guide bars.



STEP 3

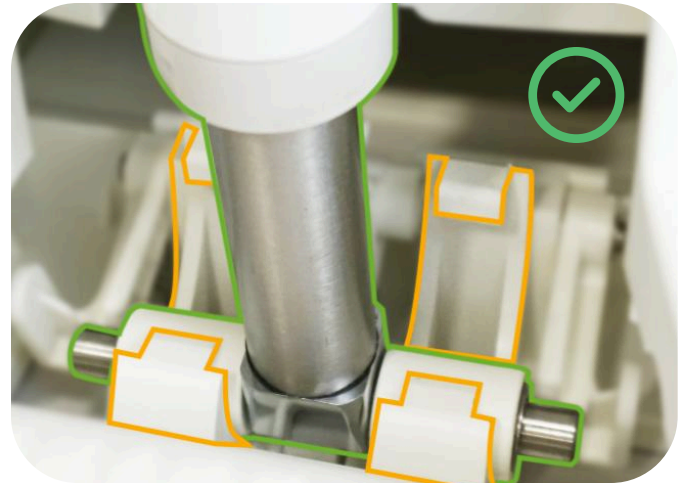
Press the hooks on each side of the backrest to connect them to the base.

The back rest should now move back and forth smoothly.



STEP 4

Make sure the **actuator bar** is connected correctly with **the base hook lock**. If the bar rests on the outside of the base hook, please realign and try again.



STEP 5

Connect the previously charged remote control to the back of the Bridge Bath Lift and test the height adjustment and emergency button to make sure it all works properly.



STEP 6

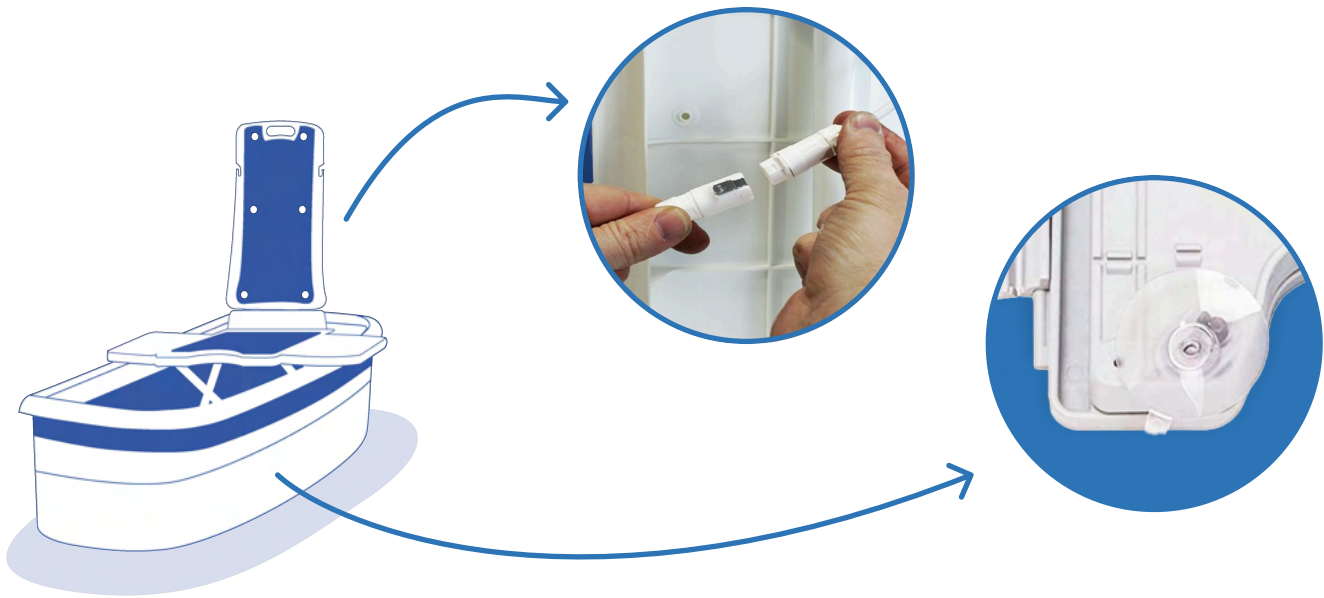
The Bridge Bath Lift is ready to use. Please make sure to read the Operation Details to better understand how to properly use the lift.



7.0 Operation Details

STEP 1

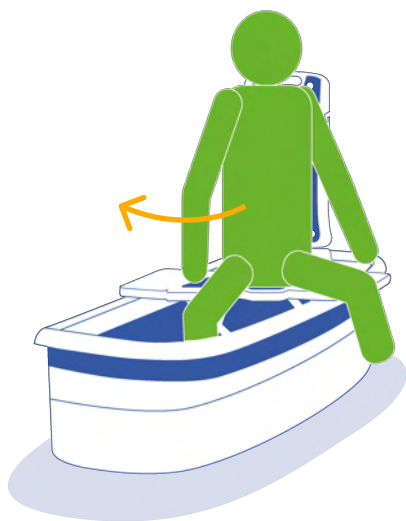
Before proceeding, ensure that the suction cups located at the bottom of the lift are securely attached to the bottom of the bathtub. Then, lift the back of the bath lift and connect the hand control to the connector on the back.



STEP 2

Allow the bath lift to rise until the side plates smoothly rest on both sides of the bathtub. Next, sit on the outer side plate on the edge of the tub — with your back facing the bathtub.



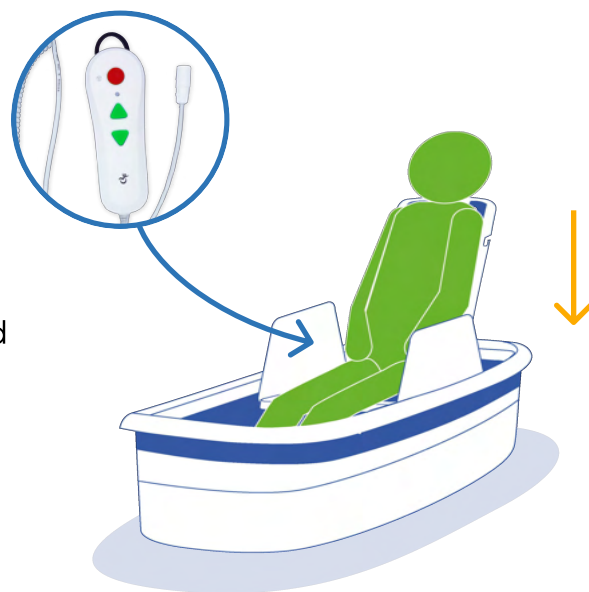


STEP 3

While maintaining this position, move your hips to the center of the bath lift seat, then proceed by placing both feet into the bathtub.

STEP 4

Once comfortably seated in the bathtub, use the hand control's down button to lower the lift to your desired position. Ensure to keep hands and feet safe from below the lift throughout this process.



STEP 5

Sit back, relax, and enjoy your bath! Experience the pure bliss of bathing in your own bathtub, maintaining your privacy and dignity without any assistance. Feel the safety and convenience you deserve.

8.0 Care and Cleaning Instructions

To clean the lift, apply a neutral synthetic detergent, wipe with a damp cloth, and then wipe with a dry cloth. Do not use products that have bleach or phenolic cleaners.



The charger must be unplugged from the power before cleaning. Clean with a dry cloth only.



Do not scratch or scrape the surface of the product with hard objects to prevent material damage.



Do not clean the actuator bar or hand control with detergent or disinfectant. If necessary, use a cloth dampened with a small amount of water.



When cleaning the lower part of the lift and under seat, pay attention to lifting the “scissors” to prevent hand clamping.



Avoid over-saturation or leaving the lift wet for an excessive amount of time.



Regularly check whether there are loose, damaged or broken parts, and if necessary, replace the damaged parts.



In a medical setting, we recommend you disinfect the lift between riders with basic disinfectant for patient and operator safety.



Avoid dropping; contact dealer for any surface damage.



9.0 FAQs

Q

Can the lift be adjusted to different heights and positions?

Absolutely! The Bridge Bath Lift provides adjustable height options, ranging from 2.38" to approximately 19". Additionally, the seat can recline up to 54 degrees after being fully lowered, ensuring customizable bathing experiences.

A

Q

Is the lift suitable for both home and medical care settings?

Absolutely! The Bridge Bath Lift is designed to cater to the needs of both home users and those in medical care settings. Caregivers and personal users can experience the convenience and benefits it offers.

A

Q

Does the lift require any professional installation?

No, the Bridge Bath Lift is designed for easy setup without the need for professional installation. You can quickly set it up and remove it as desired, providing convenience and flexibility.

A

Q

How long do the lift's batteries typically last before needing to be charged?

The batteries of the Bridge Bath Lift have an impressive lifespan, offering up to 120 lifts per charge.

A

10.0 Troubleshooting

If you have any questions about the bridge bath lift, please call us for customer service assistance. The device label will also show the serial number and the date manufactured.

Problem	Cause	Solution
The lift is unstable or slipping in the tub.	The suction cups may not be adequately adhering to the bathtub floor.	Clean the suction cups and the bottom of the tub if needed and try again. Tubs with “anti-slip” flooring may not allow the suction cups to work properly.
The Bridge Bath lift does not operate when person is seated.	The weight most likely exceeds the load capacity of the device.	Please check that the user meets the weight requirements specified in this manual.
The motor rotates but cannot rise or lower without weight.	The actuator wheel may be slipping.	Please contact us for support
The Bridge Bath lift does not operate at all, even without weight.	<ol style="list-style-type: none"> 1. If there is a buzzer sound, then the bath lift needs to be charged. 2. If there is no sound, the internal transmission may be blocked or there may be water inside. 	<ol style="list-style-type: none"> 1. Fully charge the unit and try again. 2. Please contact us for support

For any additional questions, please contact us.

11.0 Limited Warranty

Thank you for your interest in the products and services of Climbing Steps, Inc. Your safety, comfort, and satisfaction are at the heart of everything we do. For the Bridge Bath Lift, Climbing Steps, Inc. extends the following warranty coverage, reflecting our commitment to quality and your satisfaction:

What does this Limited Warranty cover?	<ul style="list-style-type: none"> • Electronics & Battery: Protected against defects in materials and workmanship for 1 year, ensuring your peace of mind.
What will we do to correct problems?	In the event of a defect, Climbing Steps, Inc. will repair or replace the affected product or part with either new or refurbished items, at no cost to you. Our aim is to ensure your complete satisfaction and to keep your equipment running flawlessly.
How long does the coverage last?	The Warranty Period offers a 180-day warranty on all products or parts from the date of purchase. Should a product or part be repaired or replaced, the new item will carry the remainder of the original product's warranty or 180 days from the date of repair or replacement, whichever is longer.
What does this Limited Warranty not cover?	This Warranty does not cover issues resulting from abnormal conditions, misuse, accidents, alterations, unauthorized repairs, or other damage not caused by defects in material or workmanship. The seat pads are recognized as subject to wear and tear, these components are crafted for endurance but not covered by the limited warranty.
What do you have to do?	If you require warranty service, please reach out to us for an evaluation of the issue and guidance on the best resolution. Our dedicated team is here to ensure your experience with our products is outstanding.

For any questions or to initiate a warranty claim, please contact us:

Email: (212) 366-5483

Phone: Info@ClimbingSteps.com

12.0 Device Label



The Bridge Bath Lift is designed for individuals with limited mobility, offering them a seamless means to access and exit the bathing area within the comfort of their homes. Its primary purpose is to alleviate the challenges of bathing for those with limited mobility, thereby enhancing their bathing experience. This device is particularly beneficial for individuals who struggle with traditional methods of entering and exiting the bathtub, providing them with a solution that promotes independence and convenience.



Manufactured by: **Mobile Patient Lift** 6601 Lyons Rd, Suite C10, Coconut Creek, FL 33073



Please See Manual for Device Symbol Definitions

Distributed by:

Mobile Patient Lift
6601 Lyons Rd, Suite C10,
Coconut Creek, FL 33073
+1 (212) 366-5483

Manual Published Date

12/17/24

Have more questions? Contact us!

Email: Info@ClimbingSteps.com
Web: www.MobilePatientLift.com
Phone: +1 (212) 366-5483

Mail:
Mobile Patient Lift
6601 Lyons Rd, Suite C10,
Coconut Creek, FL 33073

Scan with your smartphone camera to view more information about the
Bridge Bath Lift!



or visit:
www.MobilePatientLift.com



MOBILE PATIENTLIFT
BRIDGE

www.MobilePatientLift.com